

# CONNECTIONS

## New Members



**Jay Schafer, Jolene Hall,** and Jolene's daughter, **Gabby Hall**, reside in Fort Madison, Iowa. Jay is an engineer with DuPont and Jolene is a special education associate for the Fort Madison School District. Gabby is eight years old and in the 2nd grade. We are very excited to be new members at 1st Presbyterian in Burlington!

**Christine (Chris) Stensland** has an accounting degree from Iowa State University (go Clones!) and is a Certified Public Accountant and a Certified School Business Official. She has been the Chief Financial Officer for the Burlington Schools since July 1, 2003.



Chris is active in the Burlington Kiwanis Club. While chair of the Christmas Photo project, she met Kel while he was playing a certain head elf. They married on October 7, 2011 and make their home in Burlington.

More on page 4.

## Holy Week Happenings

### Palm Sunday

April 1

**9 a.m. Community Donkey Walk**  
Snake Alley

**9-9:45 a.m. Pancake Breakfast**  
Fellowship Hall

**10 a.m. Worship Service**  
Sanctuary  
The Lord's Supper

### Easter Sunday

April 8

**6:30 a.m. Sunrise Service**  
At home of Bill Carter & Sue Lyon  
500 Washington Road, West Burlington  
Continental breakfast, casual dress  
encouraged

**10 a.m. Traditional Worship Service**  
No Sunday School

# Glimpses of Grace...by Deb Kinney

Awhile back, the opportunity went out to the congregation to respond to the 'If' question: If you could name the top three priorities for FPC, what would they be? I was looking some of them over again this week and think they bear repeating and noticing how we ARE moving forward in these directions:

1. *For members to nurture and support one another*
2. *To respond to material and spiritual needs in the larger community*
3. *To celebrate our considerable blessings as a church family and to encourage others to join us in fellowship at FPC*
  1. *to worship God*
  2. *to study the Bible and how it can work in our lives today*
  3. *to outreach to those seeking a new worship experience OR are looking to find God*

*Another reminds:* "...we must extend ourselves for God. It may take a long time, but you make a small step and prepare the soil, then you plant it. Then it will grow with continuous feeding and nurture and you will have a harvest which will feed many. It does not come without work, disappointment, blood, sweat, and tears, and with the blessings of God, we will do His will, of nurturing souls."

In the midst of our discipleship series, I found myself reading a book by Flora Slosson Wuellner entitled *Feed My Shepherds*. The subtitle is *Spiritual Healing and Renewal for those in Christian Leadership*. Recommended by my spiritual director a couple years ago, I think Rev. Slosson Wuellner's insights pertain to what we have been studying at FPC these past 6 weeks: "...Jesus' primary mission was not to teach us a bigger and better ... discipline but to enable us to bring the wholeness of ourselves into relationship with God." (p. 25) One of my hopes as we make our way through what it means to follow Jesus is that we discover this anew. There are times we need to be reminded that all the memorization, all the prayer, all the acts of love we have been experiencing through this season of Lent are ways to help us in the deepening of our relationship with God. The disciplines are the means to the end, not the end in and of themselves. And the more they become habits, or second nature, the more time we find we are spending with God. As Rev. Slosson Wuellner notes: "...our growing closeness with God was never intended to be a burden or one more task added to all the other tasks. Personal relationship with God was meant to remove the sense of burden and to infuse all tasks with new vitality."

Bringing the wholeness of ourselves into a deeper, more intimate relationship with God will infuse us with new vitality. It will give us new life, new energy, new love as we read His Word, as we communicate in prayer, as we love our neighbors as we love ourselves. As this Lenten journey culminates for 2012 with the celebration of Palm Sunday, the Seder meal and then Easter, I pray we will share this new energy, new life and new love with others. After all, that is what Easter is all about! We are blessed to be a blessing every day.

# Because We Care...by Carl Boley

Spring Road Clean-up will be Saturday, April 21st. We will begin at 9:00 a.m. and should finish around 11:30. Any able-bodied person over the age of 14 is welcome to take part in this semi-annual event.

We will meet at the Nazarene Church, located at the intersection of Rt. 61 and Mason Road. The more people who help, the less work for each individual. There is a sign up sheet in Fellowship Hall.



# From the Trustees

## Statement of Income & Expense February 29, 2012

	Budget	Actual	Variance	Percent of Budget
<b>Income</b>				
Pledge	161,016.00	34,351.00	126,665.00	21.3%
Non Pledge	27,015.00	4,361.16	22,653.84	16.1%
Investment In- come	50,700.00	24,200.14	26,499.86	47.7%
PerCapita	5,000.00	201.52	4,798.48	4.0%
Refunded 2012 Capital Cam	21,395.00	0.00		
<b>Total Income</b>	<b>265,126.00</b>	<b>63,113.82</b>	<b>202,012.18</b>	<b>23.8%</b>
<b>Expenses</b>				
Personnel	162,501.00	20,383.04	142,117.96	12.5%
Educational Ministries	3,000.00	381.02	2,618.98	12.7%
Congregational Life	1,250.00	189.15	1,060.85	15.1%
Deacons	250.00	0.00	250.00	0.0%
Mission	22,540.00	2,919.13	19,620.87	13.0%
PerCapita	5,000.00	833.34	4,166.66	16.7%
Property	63,985.00	9,877.98	54,107.02	15.4%
Worship	4,500.00	774.52	3,725.48	17.2%
Welcoming Committee	2,100.00	275.00	1,825.00	13.1%
<b>Total Expenses</b>	<b>265,126.00</b>	<b>35,633.18</b>	<b>229,492.82</b>	<b>13.4%</b>
<b>Differential</b>		<b>27,480.64</b>		



## New Members continued...



**Mandi Bundrick**, Director of Educational Ministries at FPC, has recently moved to Iowa from Texas. She has her Masters' of Divinity degree with her focus on Christian Education. She experienced her first snowfall in Burlington and is looking forward to spring and

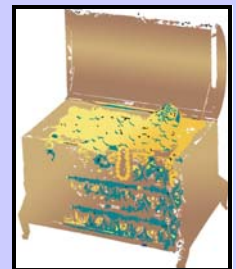


**Sandy Smith**, is a Registered Nurse for Burlington Oral Surgeons. She has been married to Ken for 38 years and has 2 children and four grandchildren in Kansas City.

She enjoys flower gardening, quilting, sewing and spending time with her grandchildren.

## Treasure Chest...by Janet Calvin

The treasure chest is in need of gifts to be sent to the Children's Hospital at the University of Iowa. The gifts will be sent in April. Thank you to all our church family who support this program and have been so generous with the gifts you have given. To choose a gift from the treasure chest gives each child undergoing treatments something to look forward to and gives them something to do to help them through their stay in the hospital. Thank you for sharing God's love with these children.



## Community Basket Tickets

The Mariners are selling Community Basket tickets this year and they are available in the church office until Monday, May 9. The church earns \$1 from each ticket sold. Please support our ministries by purchasing a few for yourself and selling some at work.





# News-worthy Notes



Please give a huge ‘thank you!’ to **Andy and Debbie Opiekun, Joanna Schneden (& Ella Jo and Brock)** for all their work behind the kitchen counter. The Opiekuns have been organizing, cooking and cleaning up after our Lenten suppers (5 weeks) for the past few years. Thanks, also, to those who helped clean up when necessary.

Please give another huge ‘thank you!’ to **Marilyn Nuss, Joan Hertzler, Pat Whitmore, Allie Brink, Lou Harter, Barbara Blom, Brenda Frederick and Sue Gilchrist** for providing desserts for those 5 weeks.

Have you ‘note’iced the new carpet in the Parlor? And the new welcoming look that is being created? ‘Thank you!’ to **Arnie Anderson, the Trustees, Sandy Morrison and the Welcoming Committee** as they continue this ongoing work in progress.

Have you ‘note’iced the enhanced sound on Sundays? A huge ‘thank you!’ to **Ted Francis** as he continues to help us make do and do better in this area.



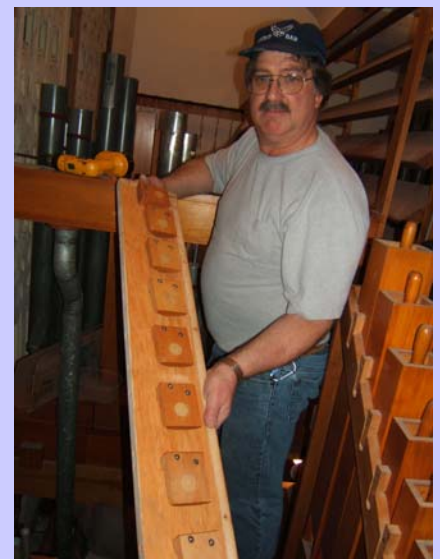
Everyone who volunteers their time is greatly appreciated. And any time one person is noted for their long service, others may be left out. We apologize in advance for that. However, if you know of a longtime volunteer you would like mentioned and noticed, please let the church office know.

The Worship Team continues to seek new ways to enhance the worship experience by using E.P.I.C. as our guide: **Experiential, Participatory, Image-driven, Community**. If you have an interest in drama, special music or being a liturgist on Sundays, please contact a member of the Worship Team: Marilyn Nuss, moderator, Carol Brotherson, Eva Ann Elmer, Terri Huddleston, Randy Kinney, or Ken Velharticky.

## ORGAN NOTES 2...by Rodney Levson, President of Levson Organ

At right, is Mr. Rod Levsen, Jr. working on the organ. Below is a helper.

The Aeolian-Skinner Company was one of the most prestigious pipe organ companies ever known in the United States. They built 1,537 of the largest and most famous organs, many of which are still in use in larger churches all across our country today. The Aeolian-Skinner organs are respected and treasured by the finest organists. For about 20 years, Harold Lucas of Wheaton, Illinois, a representative of the manufacturer, tuned and cared for the organ. Mr. Lucas retired in 1970 and referred many of his clients to Levsen Organ Company of Buffalo, Iowa.



# Pastor's Report...by Deb Kinney

## Worship

5 worship services

1 funeral

## Christian Education

Led 10 Bible studies on Wednesday mornings

Led 1 Sunday morning Bible study

## Conversation

27 Drop-ins/appointments/calls

## Hospital/home

2 visits

## Church Meetings

Worship

Session

Trustees

Staff lunch, staff dessert for Mandi Bundrick

Staff meetings (3)

Mission

Welcoming

Educational Ministries

## Church Activities/Events Attended

Knitwits

Discipleship Supper

Mariners' Game Night

Kids Against Hunger

Men over 66 breakfast

Mariners' BHS basketball outing

YumYum

## Presbytery

Installation service for Wapello pastor

## Education

Prep for Bible studies/sermons

## Other

*Connections* articles & coordination

Worship service prep

Meetings with individual Staff (8)

Eagle Scout ceremony

## Community

1 Spiritual Direction session

Kiwanis meetings (2)

Young House Board of Directors

# Director of Educational Ministries Report...Mandi Bundrick

## Worship

Worship services (3)

Ash Wednesday service (assist with liturgy)

## Connections

7 visits/appointments/calls/letters

## Church Meetings

Staff Meeting

Meetings with Pastor (2)

Senior Samaritans (3)

Educational Ministries Team meeting

## Church Activities/Events I Attended

Yum-Yums dinner

Kids Against Hunger

Women's Bible Study (2)

## Church Work Day

## Education

Meeting with new Educational Ministries Team moderator

Lenten Wednesdays elementary & preschooler, Bible study prep

Connections Articles (3)

Children's Sermon Prep and delivery (3)

Assist with nursery needs during Sunday services (2)

## Other

Assisted with Delivering backpacks to Grimes Elementary

Attended BHS Basketball Game

# Presbyterians at Work

‘A little to the left...’



“Watch carefully, this is how it is done”



When all else fails, read the directions!



“I am going to have a headache tonight.”



It wouldn't be Presbyterian without food.



Time for a book sale....



“Excuse me, can you help me next?”

# Serving You...

## USHERS...

- Mar. 4: \*Dick Fischer, Adele Coulter, Bruce Morrison, Kel Stensland, Tom White  
 Mar. 11: \*Curtis Blom, Rex Beetner, Bill Carter, Sandy Russell, Toshiko Velharticky  
 Mar. 18: \*Mike Gorman, Carl Boley, Ted Francis, Barb Garcia, Linda Tickel  
 Mar. 25: \*Craig Gilchrist, Kevin Eibes, Jim French, Pat Saldeen, Ron Stewart

## GREETERS...

- Mar. 4: Bonnie White, Leona Byars  
 Mar. 11: Lou Harter, Jean Miller  
 Mar. 18: Dick Fischer, Mark & Deb Scott  
 Mar. 25: Marilyn Malcom, Polly Rein

**ELDERS:** Arnie Anderson, Marcia Bailey, Claudine Capps, Ted Francis (clerk of session), Jesse McCormick, Bruce Morrison, Cindy Murphy, Marilyn Nuss & Sue Sattler.

**DEACONS:** Barbara Blom, Curtis Blom, Brenda Frederick, Sue Gilchrist, Jo Hamilton, Lou Harter, Don Krekel, Penny Rucker, Carl Siefken, Donna Siefken, Linda Tickel & Ken Velharticky.

**TRUSTEES:** Carrie Blom, Carl Boley, Tom Murphy (Secretary), Debbie Opiekun (President), Marilyn Leight (Treasurer), Ed Whitmore (Vice President).

## COMMITTEE MODERATORS:

- |  |                              |
|--|------------------------------|
| Educational Ministries: Arnie Anderson | Nominating: Bruce Morrison   |
| Congregational Life: Claudine Capps    | Personnel: Ted Francis       |
| Deacons: Ken Velharticky               | Maintenance: Jesse McCormick |
| Endowment: Wilma Hemphill              | Mission: Bruce Morrison      |
| Memorials: Marcia Bailey               | Worship: Marilyn Nuss        |



- April 1 ..... Janice Kemp  
 April 3 ..... Nick Logan  
 ..... Tom Russell  
 ..... Julie Schulthies  
 April 4 ..... Dal Thompson  
 April 6 ..... Claudine Capps  
 ..... Sundi Simpson  
 April 9 ..... Jessica McCormick  
 April 10 ..... Charles Hanson  
 April 12 ..... Harrison Murray  
 April 13 ..... Charles Bell  
 ..... Ted Francis  
 April 16 ..... Sally Bell  
 April 17 ..... Lee Parks  
 April 18 ..... Scott Eibes  
 April 19 ..... Joe Sattler  
 April 23 ..... Lola Eberhard  
 ..... Tosh Velharticky  
 April 24 ..... Bruce Morrison  
 April 25 ..... Pat Saldeen  
 April 27 ..... Alisha Buckles  
 ..... Ruth DeGrange  
 April 28 ..... Nancy Lazenby  
 April 30 ..... Geniece Repertinger

# Thank You

I wish to thank my great church family for the support, in many ways, during the time of sorrow at the passing of my son, Kirby.

A thank you from the entire family for the service Pastor Deb delivered at his funeral.

**Carl Boley and family**

Thank you to my wonderful church family for the food, cards, prayers, thoughts and kind words following the recent death of my mother.

Everything was truly appreciated.

**Irene Kress**



# Session Minutes...by Ted Francis

## Minutes of the Stated Meeting of Session

February 20, 2012

1<sup>st</sup> Presbyterian Church, Burlington, Iowa

A Stated Meeting of the Session of First Presbyterian Church, Burlington, Iowa was held in the church parlor on February 20, 2012. **Rev. Deb Kinney** opened the meeting at 7:00 p.m. with prayer. A quorum was present.

Present were: Moderator Deb Kinney and Elders Arnie Anderson, Marcia Bailey, Claudine Capps, Ted Francis, Bruce Morrison, Cindy Murphy, Marilyn Nuss, Sue Sattler

Elder excused: Jesse McCormick

### Agenda Approval

A motion to approve the agenda was APPROVED by voice vote.

### Minutes Approval

Minutes from the Stated Meeting of the Session on December 19, 2011 were APPROVED by voice vote.

Minutes from the Annual Congregational Meeting on January 29, 2012 were APPROVED by voice vote.

### Staff Reports

A motion to receive the Report of the Pastor was APPROVED by voice vote.

### Committee Reports

**Educational Ministries:** **Arnie Anderson** is the new moderator. A new committee is being formed. They will have their first meeting on Monday, February 27<sup>th</sup>. The initial focus will be on children and youth. A new group ministry is beginning for men age 66 and above. **Mandi Bundrick** is facilitating the group. They are interested in service projects and visitation. Twelve men attended the first meeting.

**Congregational Life:** A spiritual retreat is being planned for June 9, 2012 from 9:00 a.m. to 2:00 p.m. A Green Easter Feaster potluck will be held after church on Sunday, March 18, 2012. A mother-daughter dessert potluck will be held after worship on Sunday, May 6, 2012. Worship in the Park will be Sunday, June 10, 2012.

**Worship:** The following communion dates for 2012 were APPROVED by voice vote: Jan. 1, Feb. 5, Feb. 22 (intinction), March 4, April 1, April 5 (Seder Meal), May 6, June 3, August 5, Sept. 2, Oct. 7, Nov. 4, Dec. 2, Dec. 24. A motion giving permission to serve wine for communion during the Seder Meal on Maundy Thursday (April 5<sup>th</sup>) was APPROVED by voice vote.

### Report of the Mariners

Paperwork required by the City of Burlington for the Junk in the Trunk sale is proceeding.

A motion to receive the reports from the Standing Session Committees, Deacons, Mariners, and Trustees was APPROVED by voice vote.

### Report of the Clerk

Electronic approval was given by Session during January to three requests. A motion to re-affirm approval for the following requests was APPROVED by voice vote:

- **Barb Garcia** requests use of the church facilities on February 12, 2012 from 12:00-4:00 p.m. for **Javier Garcia's** Eagle Scout Ceremony.

-

- **Barb Garcia** requests permission to have an 80<sup>th</sup> birthday celebration for her father, **Roger Erickson**, during Fellowship Hour on Sunday, January 15, 2012. Garcia's will provide the birthday cake.

A request to appoint **Toddy Gorman** to serve as Clerk Pro Tem for the Annual Meeting of the Congregation on Sunday, January 29, 2012

A motion to approve the transfer of membership of **Marion** and **Pat Shaffer** to Grace Methodist Church, Burlington, Iowa was APPROVED by voice vote.

A motion to approve a request to baptize **Miya Lunsman**, daughter of **Kraig Lunsman**, during worship on Sunday, April 8, 2012 was APPROVED by voice vote.

A motion to approve the following statistical report to the General Assembly was APPROVED by voice vote.  
(See page 14)

A motion to approve a request to use the church facilities for a luncheon following the funeral of **Russell Cook**, father of **Judy Parks**, on February 25, 2012 from 11:00 a.m. - 3:00 p.m. was APPROVED by voice vote.

A motion to receive the Report of the Clerk was APPROVED by voice vote.

### **Old Business**

A motion to elect **Ed Whitmore** to serve as commissioner to Presbytery was APPROVED by voice vote.

The Session reviewed the revised "Description of Duties--Board of Trustees." After discussion a motion was made to delete "Oversees and works with scholarship funds and Gifts and Memorials Committee" from the "Financial Management" section of the document. The motion was APPROVED by voice vote.

A motion to approve the following "Description of Duties--Board of Trustees" was APPROVED by voice vote:

## **Description of Duties--Board of Trustees**

### **General:**

The establishment of the Board of Trustees was recommended by the Session, and voted by the Congregation of the First Presbyterian Church in Burlington for the purpose of fulfilling the *practical* rather than the *spiritual* needs of the church body. The Trustees serve as members of the corporation provided by the *Book of Order*. While the Board of Trustees is separate from the Session, the Session provides necessary direction, support, review and control of the Trustees. The Trustees are guided by the Church's Strategic *Plan* in their decision making process.

### **Organization:**

The officers of the Board of Trustees shall consist of the Chair, Vice Chair and Secretary; all to be elected annually. The Board shall meet a minimum of once a month unless the press of business dictates special meetings. A quorum, consisting of a simple majority of the members, will be necessary to conduct business. A simple majority is required to pass a motion. The Trustees shall elect annually: a Trustee to be chairman of the Property committee who will also serve as President of the corporation, a Trustee to be chairman of the Finance committee who will also serve as Vice-President of the corporation, and a Trustee to serve as Secretary of the corporation as well as Secretary of the Board of Trustees. The Church Treasurer, as selected by Session shall also be Treasurer of the corporation. The total number of Trustees shall be five, to serve three-year terms each. Terms would alternate

and elections would be held at the special-called meeting in May each year for three-year terms.

## **Duties:**

The duties of the Trustees shall consist of the following:

### **Property Management**

When authorized by the Session, to receive, hold, encumber, manage and transfer property, real or personal, for the church.

When authorized by the Session, to accept and execute deeds of title to such property

To hold and defend title to such property

To manage any permanent special funds for the furtherance of the purposes of the church, all subject to the provisions of the *Constitution of the PC (USA)*, provided further that in buying, selling and mortgaging real property, the trustees shall act only after approval is granted in a duly constituted congregational meeting and with the consent of the Presbytery.

Enter into rental agreements and collect funds from such rental for use of church property.

With Session approval, explore the need for capital improvement loans for major repairs and construction projects.

Oversees any plans for construction, and any construction activities resulting from such plans

Serves on any special committees established by Session concerning property management

### **Financial Management**

Prepares and monitors church budgets

Prepares long range capital goals for Session approval

Oversees and works with investment and endowment funds committee

Selects and reviews insurance policies

Selects and maintains church equipment such as computers, audiovisual, photographic, copiers and telephones, etc.

### **Stewardship**

Works with Session to prepare annual challenge budget to identify needs of the church before pledges are received.

Conveys to the congregation, through letters, newsletters and announcements the budgetary needs

Conducts annual pledge drive, with follow-up

Conducts talent inventory of members, and conveys to Session the talents available for use within the church.

## **New Business**

**Bruce Morrison** updated the Session on an anonymous concern reported during the December 19, 2011 meeting. He recommended the individual send a letter to Session.

A motion to adjourn the meeting was APPROVED by voice vote.

**Rev. Deb Kinney** closed the meeting with prayer at 7:44 p.m.

Respectfully submitted,

Ted Francis, Clerk of Session

Rev. Deb Kinney, Moderator



# Church Report 2011

**PIN Number**            11889  
**Presbytery Number**    080180

**Church**                    First Presbyterian Church  
**Address**                   321 N 5th St  
**City/State**                Burlington, IA 52601-5317  
**Phone**                     319-752-6626  
**Email**                      [1stpresb@1presb.org](mailto:1stpresb@1presb.org)  
**Web Site**                 [www.1stpresb.org](http://www.1stpresb.org)  
**Fax**                         [319-758-0650](tel:319-758-0650)

**Membership**

Prior Active Members    **289**

**Gains**

17 & Under                **2**  
 18 & Over                   **1**  
 Certified                    **1**  
 Other                         **1**

**Total Gains**             **5**

**Losses**

Certified                   **10**  
 Deaths                     **4**  
 Other                        **1**

**Total Losses**            **15**

**Total Active Members**   **279**  
 Baptized                    **29**  
 Total Adherents            **308**  
 Female Members            **156**

**Average Attendance**    **109**  
**Affiliate Members**        **3**

**Baptisms**

Child Baptisms            **6**  
 Adult Baptisms

**Officers**

Male Session              **4**  
 Female Session            **5**  
 Male Deacons              **4**  
 Female Deacons            **8**

**Age Distribution of Active Members**

	<b>Male</b>	<b>Female</b>
25 & Under	<b>17</b>	<b>14</b>
26 - 45	<b>14</b>	<b>22</b>
46 - 55	<b>7</b>	<b>18</b>
56 - 65	<b>19</b>	<b>30</b>
Over 65	<b>42</b>	<b>64</b>
<b>Total Distribution</b>	<b>99</b>	<b>148</b>

**People with Disabilities**

Hearing                    **8**  
 Sight  
 Mobility                    **3**  
 Other

Sight			
Mobility	3		
Other			

---

**Christian Education**

Birth 3	13	Grade 7	1
Age 4	3	Grade 8	3
Kindergarten	4	Grade 9	2
Grade 1	1	Grade 10	3
Grade 2	1	Grade 11	7
Grade 3	1	Grade 12	4
Grade 4	4	Young Adults	28
Grade 5	4	Over 25	216
Grade 6		Teachers/Officers	
<b>Total</b>	<b>295</b>		

---

<b>Racial Ethnic Break-down</b>	<b>Membership</b>	<b>Elders</b>	<b>Deacons</b>	<b>Male</b>	<b>Female</b>
Asian	3			1	2
Black					
African American					
African					
Middle Eastern					
Hispanic	3			3	
Native American					
White	273	9	12		
Other					
<b>Totals</b>	<b>279</b>	<b>9</b>	<b>12</b>	<b>4</b>	<b>2</b>

---

<b>Potential Giving Units</b>	<b>134</b>		
<b>Budgeted Income</b>	<b>241,000</b>		
<b>Budgeted Expense</b>	<b>241,000</b>		

---

<b>Receipts</b>	
Regular Contributions	184,000
Capital Building Fund	
Investment Income	55,400
Bequests	
Other Income	
Subsidy or Aid	

---

<b>Expenditures</b>	
Local Program	200,000
Local Mission	18,000
Capital Expenditures	22,000
Investment Expenditures	
Per Capital Apprt	9,150
Validated Mission	
Theological Fund	
Other Mission	

# Church Connections

## PW News

April 4



Location: Eva Ann Elmer at home  
Co-Hostesses: Marilyn Leight  
Study Leader: Eva Ann Elmer  
Mission: Toys for the Treasure Chest

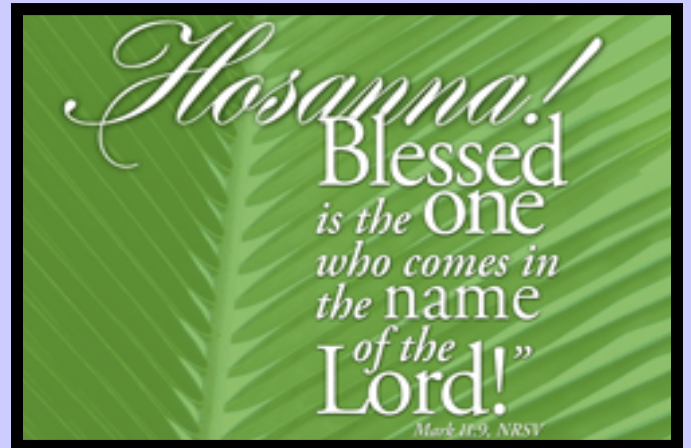
**The Mission Statement** of the First Presbyterian Church is to help make connections:

- Between people and Christ
- Among people who worship and serve together
- Between our members, their ministry and the needs of the world



## Mission Committee News

The Mission Committee continues to receive notes of appreciation from the organizations that they support financially. The notes received this month were from The Burlington Homeless Shelter, Young House Family Services, University of Iowa Children's Hospital for treasure chest items and for adopting 2 families at Christmas time.



## Yum-Yum Club

Thursday, April 19th



Yum-Yum Group Outing - The next fellowship gathering is scheduled for the "Pink Tavern" in Lomax, IL on April 19. We will meet at the church by 5:30 PM and caravan across the river to the "Pink"! Please call Toddy or Mike Gorman to make a reservation: 208-0842.

A thank you letter was received from Sherry Lang, RN, from The University of Iowa Children's Hospital. She thanked us for our February donation of toys. The items were placed in the Treasure Chest for children to choose after their procedures.

**Come to Church with a Can** is off to a great start this year!



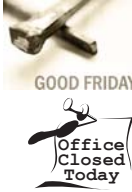


353 food items have been donated by church members as of the 4th week in March. The Community Action Center has expressed its' thanks many times for the most generous giving by our members.



**Come to Church with a Can**



# April

Sunday	Monday	Tuesday	Wednesday	Thursday	Friday	Saturday
<b>1</b> <b>9:00 AM</b> Donkey Walk/Pancake Breakfast <b>10:00 AM</b> Worship <b>11:00 AM</b> Reception for New Members 	<b>2</b> <b>4:45 PM</b> Worship Committee <b>6:00 PM</b> Educ. Min. Team (EMT)	<b>3</b>	<b>4</b> <b>7:15 AM</b> M. Bible Study <b>8:30 AM</b> W. Bible Study <b>9:45 AM</b> Presbyterian Women <b>6:00 PM</b> Handbell Practice <b>7:00 PM</b> Choir Practice	<b>5</b> <b>10:30 AM</b> Gems <b>6:00 PM</b> Seder Feast/Communion 	<b>6</b> 	<b>7</b>
<b>8</b> <b>6:30 AM</b> Sunrise Service @ Bill Carter's home <b>10:00 AM</b> Worship 	<b>9</b>	<b>10</b> <b>7:00 PM</b> Mission Committee	<b>11</b> <b>7:15 AM</b> M. Bible Study <b>8:30 AM</b> W. Bible Study <b>9:30 AM</b> Knitwits <b>6:00 PM</b> Handbell Practice <b>6:00 PM</b> Mason Road Task Force <b>7:00 PM</b> Choir Practice	<b>12</b> <b>10:30 AM</b> Gems	<b>13</b>	<b>14</b> <b>6:30 PM</b> Card Party @ Murphy's
<b>15</b> <b>9:00 AM</b> Sun. School/ Godly Play <b>10:00 AM 10:00 AM</b> Worship	<b>16</b> <b>7:00 PM</b> Session Meeting	<b>17</b> <b>4:15 PM</b> Trustees Meeting	<b>18</b> <b>7:15 AM</b> M. Bible Study <b>8:30 AM</b> W. Bible Study <b>6:00 PM</b> Handbell Practice <b>7:00 PM</b> Choir Practice	<b>19</b> <b>10:30 AM</b> Gems <b>1:30 PM</b> Hope Haven Birthday Party <b>6:30 PM</b> Yum Yum Group	<b>20</b>	<b>21</b> <b>9:00 AM</b> Because We Care/Road Clean Up
<b>22</b> <b>9:00 AM</b> Sun. School/ Godly Play <b>10:00 AM 10:00 AM</b> Worship	<b>23</b>	<b>24</b>	<b>25</b> <b>7:15 AM</b> M. Bible Study <b>8:30 AM</b> W. Bible Study <b>6:00 PM</b> Handbell Practice <b>7:00 PM</b> Choir Practice	<b>26</b> <b>10:30 AM</b> Gems	<b>27</b>	<b>28</b>
<b>29</b> <b>9:00 AM</b> Sun. School/ Godly Play <b>10:00 AM 10:00 AM</b> Worship	<b>30</b>	 <b>April 1 Palm Sunday</b>				

## SAVE THE DATES: June 22, 23 & 24 2012

Are you a games guy, an artist, a drama queen, a phys ed guru? Do you love spending time with children, using your imagination, and having fun? You're in the right place at FPC!

Introducing... Weekend VBS *Express* 2012

*Rocky Point Lighthouse: Shine God's Light!*

Sponsored by FPC Educational Ministries Team Pre-registration Begins Sunday May 6th, 2012

Registration forms can be picked up at the Info counter outside the church office in May.

Our VBS Participant Goal—30 preschool and elementary students combined.

Contact Mandi if you want to help!

